

Long-Term Road Works

DENM, IVI and MAP

Jaap Vreeswijk – MAP traffic management

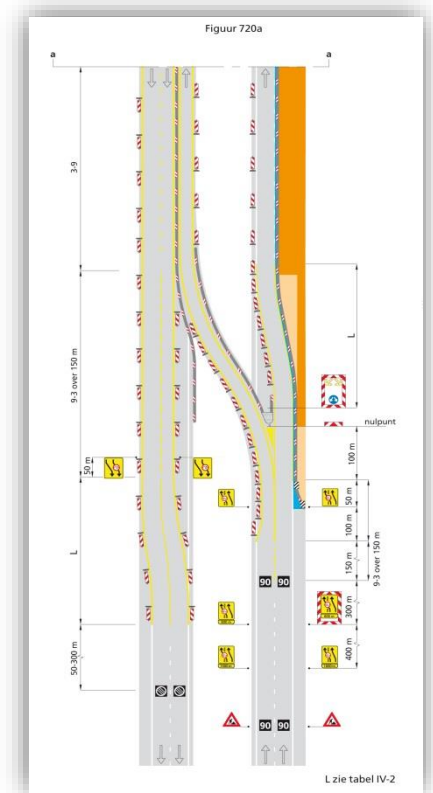
"C-ITS Deployment is underway!" Part III
14 February 2017, Schiphol Amsterdam



Get It On The Road, Get It In the Car.

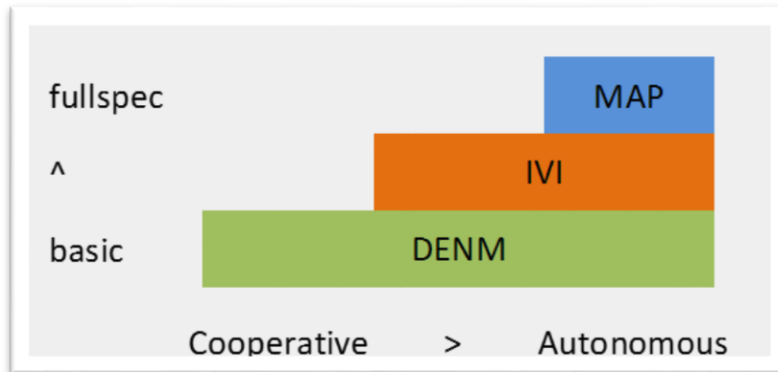
Process

- Task force Long-Term Road Works Warning: KO September '15
- October '15: meeting road authorities and consultants
 - LT-RWW layouts, data requirements, potential message sets
- January '16: OEM workshop (15 participants)
 - Assessment of DENM, IVI and MAP, complementarity, roadmap
- March '16: Revision of “Message Set and Triggering Conditions for RWW service”
- April '16: proposal workplan



Main topic of discussion

- Complementarity:
 - DENM
 - IVI
 - MAP
- Day 1 → Day 2 → HAD



| | DENM | IVI | MAP |
|--|------|-----|-----|
| RWW type | Y | N | N |
| Position | Y | Y* | Y* |
| Speed limits (per lane) | Y | Y | Y |
| Lane closures | Y | Y | Y |
| Hard shoulder usage | Y | Y | Y |
| Sharp curve warning | Y | Y | Y |
| Slow or stationary vehicles | Y | N | N |
| Work related / environmental warnings | Y | Y | N |
| End of queue | Y | N | N |
| Length of work | Y* | N | Y |
| Width restrictions | N | Y* | Y |
| Lane topology, deviations, counterflow | N | N | Y |
| Lane geometry and restrictions | N | Y* | Y |
| Route choice advise | N | Y* | N |
| Full closure and deviations | N | Y* | Y* |
| Short entry/exit ramps | N | Y | Y |
| Right of way signs | N | Y | N |
| Prohibition signs | N | Y | N |
| Direction signs or changes to these | N | Y | N |

Interviews

SDO

- Lan Lin (DENM editor)
- Jasja Tijink (IVI editor)
- David Kelley (MAP editor)

Road authority

- Yvonne Dierickx-Platschorre (Rijkswaterstaat / C-ITS Corridor)

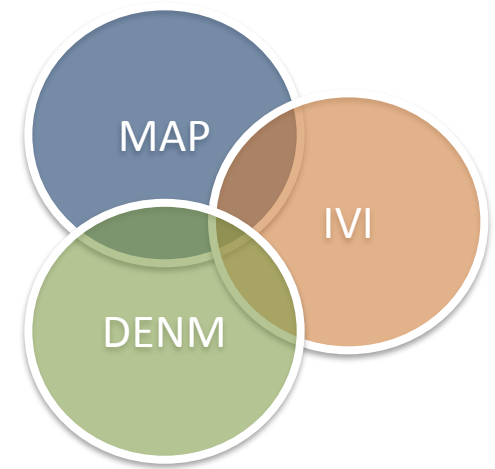
Common Views:

- Three different SDO's!
- Linkage much needed and planned/desired work item
- Solution to duplicate/contradicting content needed
- Beyond the scope of both LT and RWW alone
- Issue on content & signage codes: explicit (#) or implicit (meaning)?
- Issue on dealing with different road types
- Issue on harmonizing SDO structures



Purpose

- DENM
 - Short message, cause based, primarily for warning.
- IVI
 - Signage information, incl. lane configurations. Descriptive.
- MAP
 - Road topology information. Detailed data.
- What's the default approach? And how build on/link to that?



Request for interest and meeting

- Dedicated workshop on complementarity of DENM, IVI and MAP.
- In general, but LT-RWW as the case study.
- Expected outcomes include:
 - Message configurations: “information architecture”
 - Gaps: needed information that cannot be captured
 - Overlaps: duplicated content and approach to deal with conflicts
 - Work items: agreed standardization work item(s)
 - Revision of “Message Set and Triggering Conditions for RWW service” to include IVI, MAP and information architecture.
- Proposal: linked to the next CODECS/AG events



Long-Term Road Works

DENM, IVI and MAP

- M@il: jaap.vreeswijk@maptm.nl
- Phone: +31 6 4164 7985



Get It On The Road, Get It In the Car.